

## Corner Protectors



### Product Features:

- Reduce damage to vehicles and buildings
- Economical safety solution
- Simple to install
- Recycled rubber, blow moulded polyethylene, and galvanised steel models available

## Building corner protectors

Protect your building corners and vehicles with our corner protectors. Available in recycled rubber with reflective panels (CP1080R), blow-moulded polyethylene in hi-vis yellow (CP1090PE), or Galvanised Steel Corner Guard (CP10120G) our corner protectors provide ultimate bump and buffer\*\* protection to the corner of a building, wall, post or column, notably in areas bustling with high-volume traffic.

Barrier Group corner protectors and guards are perfect additions to all high-traffic areas such as shopping centres, carparks, factories and industrial sites, with everyday use of trolleys, forklifts, and vehicles.





Need a custom size or colour option? No problem! Our Barrier Group Galvanised Steel Corner Guards are fully customisable. Simply let our customer service team know your specific requirements and a custom quotation can be provided for you.

\*When referring to "Bump and Buffer", the product can withstand minor or accidental knocks. However, it will not offer protection from severe impacts. For robust defence against heavy impacts, please consider the column protector

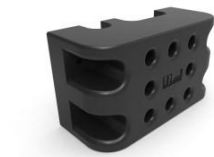
## Installation

- To install recycled rubber (CP1080R) - with six pre-moulded holes that accommodate screws. A strong industrial adhesive may also be used.
- To install blow-moulded polyethylene (CP1090PE) – attach the corner protector with the supplied straps or with eight pre-moulded holes that accommodate screws.
- To install galvanised steel corner guard (CP10120G) utilise the six pre-drilled holes to accommodate either screws or nails. A strong industrial adhesive may also be used.



Part Numbers		
Code	Image	Product Name
CP10120G		Corner Edge Protector 100 x 100 x 1200mm Gal
CP1090PE		Corner Protector 100 x 900mm LLDPE - Yellow
CP1080R		Corner Protector 90 x 90 x 800mm Recycled Rubber Black/Yellow
Description:	Corner protector	
Material:	Recycled rubber	
Width:	80mm	
Length:	800mm	
Thickness:	8mm	
Weight:	1.8kgs	
<div> We are currently compiling a list of additional services that might apply to this product.</div>		

Related Products:



[Dock-Safe Docking Bumpers](#)



[Wall Protector](#)



[B-Section Docking Bumper](#)



[Anti Collision Strips](#)



[Foam-Filled Column Cushion](#)

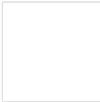


[D-Section Docking Bumper](#)

**From Just Ask**

- [Is BR165A-Y Heavy Bump Rail available in non-powder-coated \(raw\) finish?](#)
- [How do I properly install and maintain truck loading dock bumpers?](#)
- [How can we provide protection to pallet racking legs?](#)
- [Can I connect lengths of BR165A-Y Heavy Bump Rail?](#)

**From the Blog**



**How to Improve Warehouse Safety [infographic]**

[Read More](#)

**Case Studies**



[Toll Logistics](#)



[Luv-a Duck Pty Ltd](#)