

Marking Dots





Product Features:

- Highly durable injection moulded plastic.
- Simple to install using 120mm galvanised nail (supplied).
- Suitable for asphalt or concrete surfaces.
- Economical – no more faded line markings.
- Available in White or Yellow.

Economical car park delineators

Durable injection moulded plastic dots for marking car parking bays etc. Can be fixed to asphalt with galvanised nail (supplied) or alternatively fixed into concrete surfaces using a suitable two-part epoxy adhesive system. Each marking dot sold separately and supplied with a galvanised fixing nail, white or high visibility yellow, 100mm in diameter.

[Part Numbers](#) [Technical Specifications](#) [Case Studies](#) [Just Ask](#)

| Code | Image | Product Name |
|----------|---|--|
| KIT26 | | Marking Dot Spikes - Pack 100 |
| MD100S-W |  | Marking Dots with Fixing Peg pack of 10 - White |
| MD100S-Y |  | Marking Dots with Fixing Peg pack of 10 - Yellow |

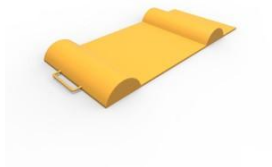
| | |
|--------------|-------------------------------------|
| Description: | Marking dots. |
| Material: | Injection moulded plastic. |
| Finish: | High visibility yellow or white. |
| Fixings: | 1 spike per marking dot (supplied). |

i We are currently compiling a list of additional services that might apply to this product.

Related Products:



Parking Separator



Smart Parking Mat