

Scorpion Wheel Clamp

Product Features:

- Fitted from side of wheel.
- No need to remove wheel trims.
- Fits a wide range of wheels
- Can be fitted to wide range of front or rear wheels.
- Robust construction to resist vandalism.
- Zinc plated to avoid corrosion.
- Reflective sign face for night visibility.
- All parts stored inside the unit when not in use.
- Very compact for storage and transport.
- Weighs 12.5kgs making it easy to carry.

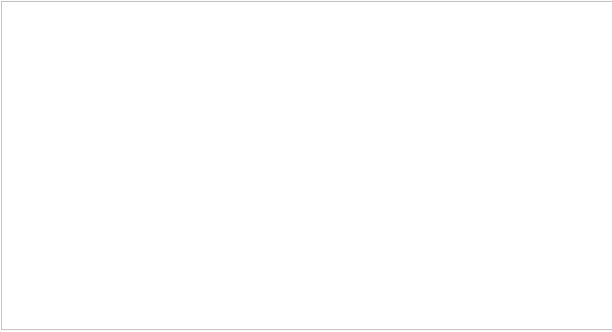


The Scorpion Wheel Clamp is a unique heavy duty wheel clamp capable of fitting a wide range of wheels from large 4WD to small sedans

Over 1000 units in service with law enforcement agencies across Australia.

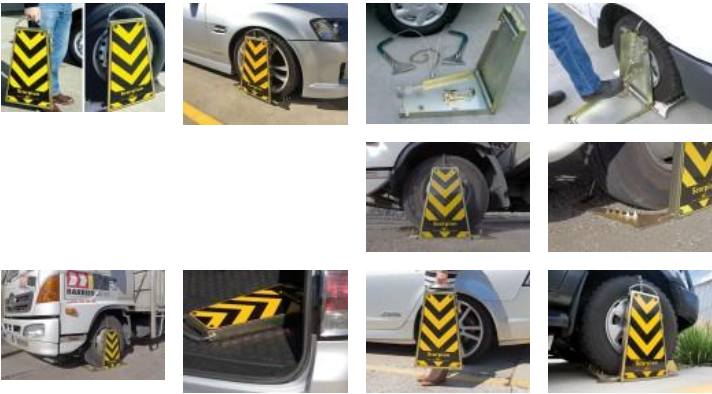
It is perfect for protecting vehicles, trailers, caravans etc. from theft. Steel jaws are clamped around the wheel using high tensile steel chain and our unique tensioning system. The Scorpion can be fitted to any wheel on the vehicle, fits steel or mag wheels and does not require the removal of wheel trims. Unlike most wheel clamps which attach awkwardly around both sides of the wheel, the Scorpion is fitted from the outside only. This makes it quick to fit and easy on the back.

It weighs 12.5kgs making it easy to carry. All parts pack neatly inside the wheel clamp for easy storage or transport.



Already in use by some of Australia’s most senior enforcement authorities and regularly featured in the media after police crack downs on dangerous drivers, the Scorpion is the perfect way to immobilise the widest range of vehicles.

Barrier Group ship the Scorpion Wheel Clamp internationally. If you are overseas and require more information please call +61 3 5278 8666



Part Numbers		
Code	Image	Product Name
SCORKIT2		Large Tyre Jaws Kit - Complete with Carry Bag to suit Scorpion Wheel Clamp
SCORKIT1		Scorpion Chain Extension Kit
SCOR1		Scorpion Wheel Clamp - Zinc Plated

Description:	Scorpion wheel clamp.
Material:	Steel case and jaws.
Finish:	Zinc plated with reflective sign face.
Height:	565mm up (650mm inc. hinged handle). 50mm down.
Weight:	4kgs operating. 12.5kgs shipping.
Locking:	Padlock (not included).

- [Will the Scorpion Wheel Clamp be fully effective if the wheels are slightly raised up from the ground?](#)
- [What would be suitable anti-theft device for a caravan?](#)
- [Wheel Clamps for large vehicles and trucks](#)
- [Can I wheel clamp on private property?](#)

 We are currently compiling a list of additional services that might apply to this product.

Related Products:



Steel Road Spikes Heavy
Duty