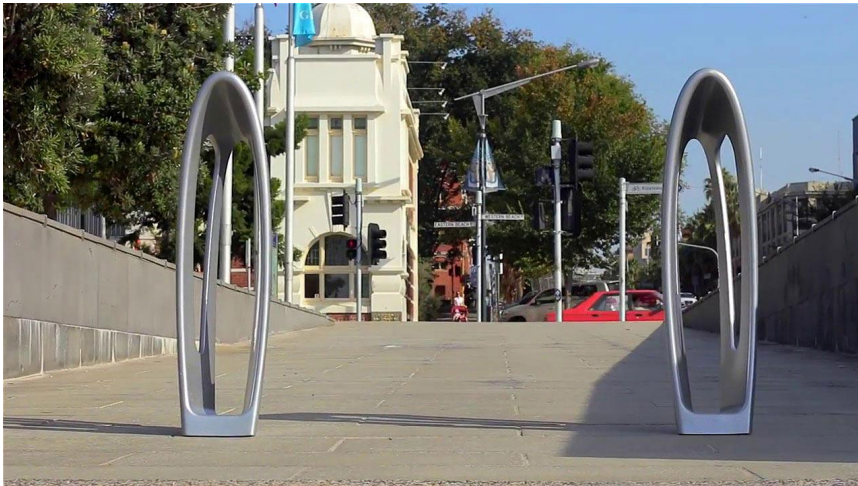


Zephyr Architectural Bollard

Product Features:

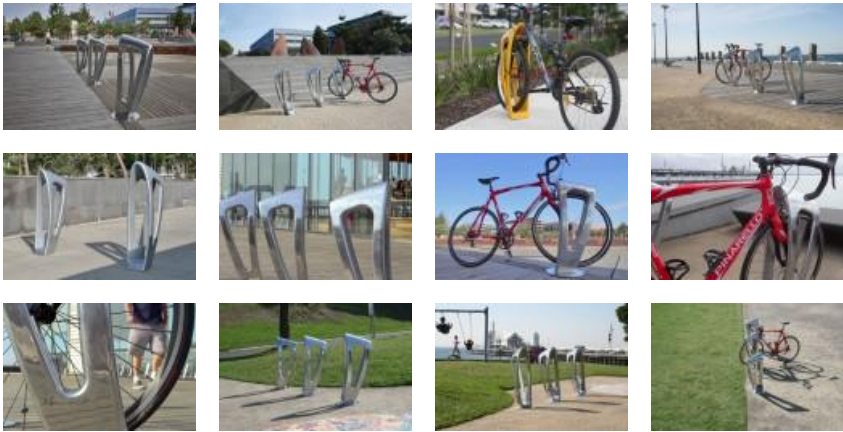


- Stunning one-piece 18kg aluminium casting.
- Multi-functional design.
- Available in polished or powder coated finishes.
- Designed and manufactured in Australia.
- Full factory installation service available.
- 100% recyclable at end of life.
- Mounting kits for fixed or removable installations (sold separately).








In a busy city the 'Zephyr' bike bollard is a stunning short or long term bicycle parking solution.

The Zephyr is more than a modern improvement to the standard bike bollard, bicycle rack and rail designs. Incorporate it into a cutting edge architectural design and it becomes a sculptured stainless steel bollard, a classic design element. In the town square or park it becomes a piece of street furniture - a gathering point, a place to stop, to chat, to bide a while with friends. Or then again, it is simply a beautiful piece of public sculpture, one that invites you to run your hands over its sumptuous metallic form and admire its smooth and generous curves.



Part Numbers

Code	Image	Product Name
KIT20		Fixing Kit for Zephyr - In Ground
BZ-POL		Zephyr Body - Polished Alloy Finish
BZ-TPP		Zephyr Body - Stainless Look Powder Coat
BZ300DC-SS		Zephyr Dress Circle - 304 Stainless Steel - #4 Finish
BZF-SM		Zephyr Mounting Kit - Surface Mounted

Description:	Bike Storage Bollard.
Material:	Cast AA601 grade aluminium from Tasmania.
Size:	845mm high x 224mm wide x 394mm deep.
Weight:	18kgs body only (not including mounting).
Finishes:	High polish alloy finish. Stainless steel look thermoplastic powder coat. Custom colour powder coat.
Fixing:	Choice of 4 mounting kits (sold separately).

Kardinia Park Trust

McDonald's

i We are currently compiling a list of additional services that might apply to this product.

Related Products:



Square Bollards Heavy
Duty Steel



316 Stainless Steel
Round Bollards



Bike Rail – Style 1
Galvanised Steel